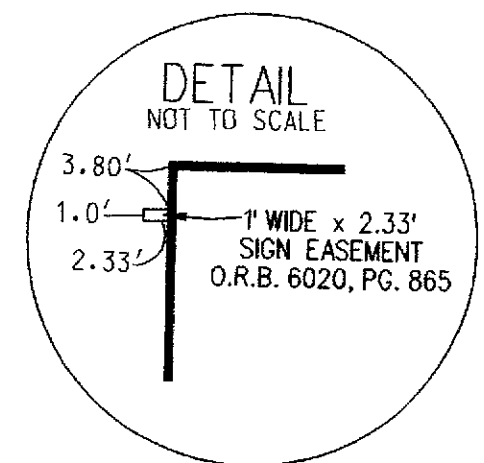
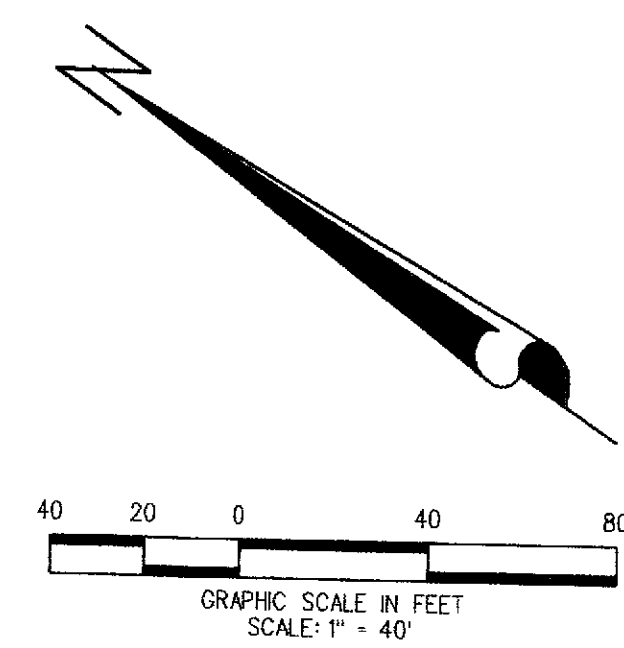
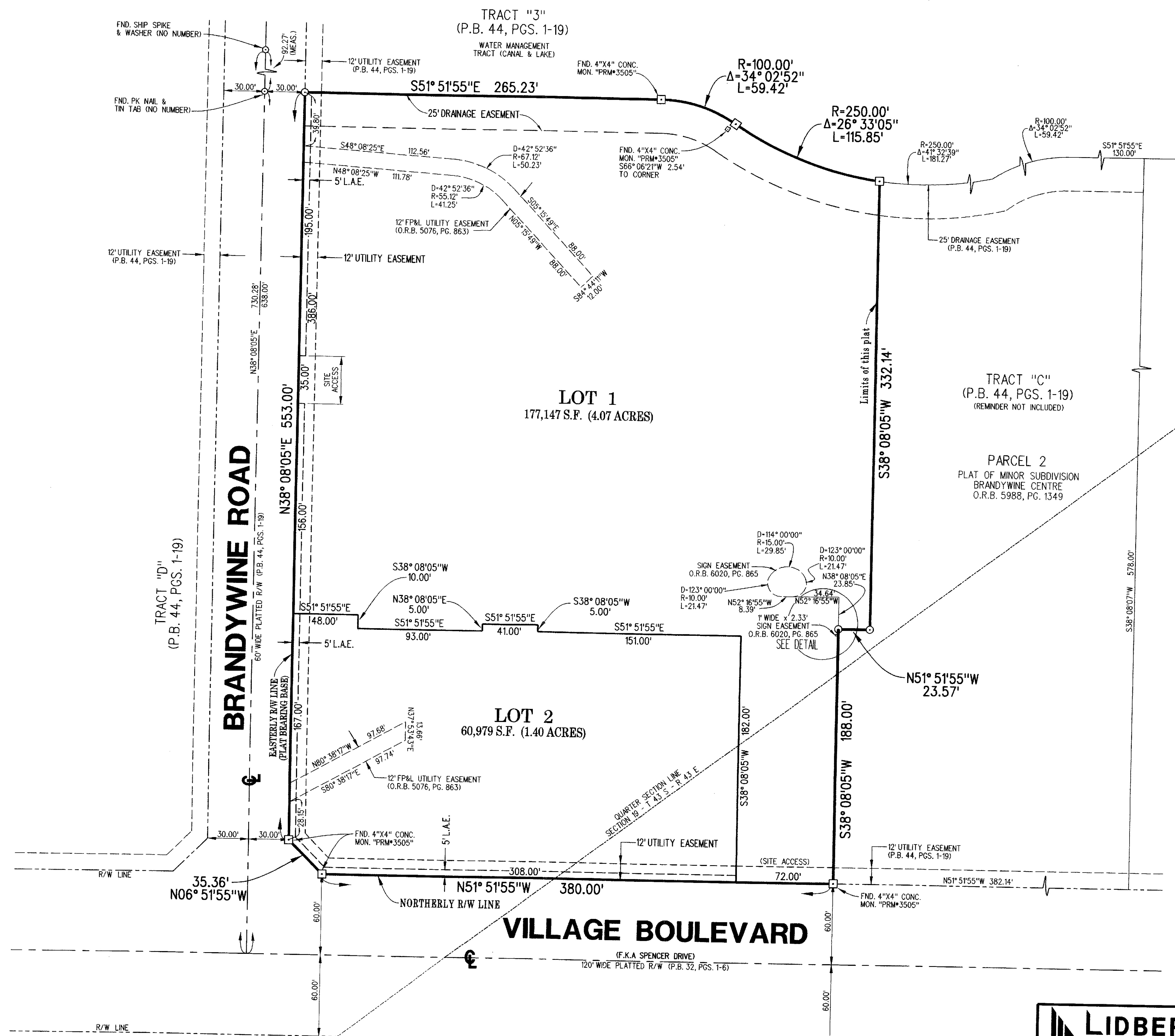


VILLAGES OF PALM BEACH LAKES - REPLAT OF A PORTION OF TRACT C

BEING A REPLAT OF A PORTION OF TRACT C, VILLAGES OF PALM BEACH LAKES PLAT NO. 2, ACCORDING TO THE PLAT THEREOF RECORDED IN PLAT BOOK 44, PAGES 1 THROUGH 19, INCLUSIVE, OF THE PUBLIC RECORDS OF PALM BEACH COUNTY, FLORIDA, AND A SUBDIVISION OF PARCEL 1, PLAT OF MINOR SUBDIVISION FOR BRANDYWINE CENTRE, AS RECORDED IN OFFICIAL RECORD BOOK 5988 PAGE 1349, PUBLIC RECORDS OF PALM BEACH COUNTY, FLORIDA, LYING IN SECTION 19, TOWNSHIP 43 SOUTH, RANGE 43 EAST, CITY OF WEST PALM BEACH, PALM BEACH COUNTY, FLORIDA.

JUNE 2011 SHEET 2 OF 2

61



| AREA TABULATION | | |
|-----------------|-------------|---------|
| LOT | SQUARE FEET | ACREAGE |
| 1 | 177,147 | 4.07 |
| 2 | 60,979 | 1.40 |
| TOTAL | 238,126 | 5.47 |

ABBREVIATIONS:

- Δ = DELTA
- F.K.A. = FORMERLY KNOWN AS
- F.P.L. = FLORIDA POWER & LIGHT CO.
- L = ARC LENGTH
- L.A.E. = LIMITED ACCESS EASEMENT
- O.R.B. = OFFICIAL RECORD BOOK
- P.B. = PLAT BOOK
- PG. = PAGE
- P.R.M. = PERMANENT REFERENCE MONUMENT
- P.S.M. = PROFESSIONAL SURVEYOR AND MAPPER
- R = RADIUS
- S.E. = SOUTHEAST
- S.W. = SOUTHWEST
- U.E. = UTILITY EASEMENT

LEGEND:

- DENOTES PERMANENT REFERENCE MONUMENT (P.R.M.) SET 4"x4" CONCRETE MONUMENT WITH DISK STAMPED "PRM LB4431" UNLESS OTHERWISE NOTED
- DENOTES PERMANENT REFERENCE MONUMENT (P.R.M.) SET MAG NAIL & DISK STAMPED "PRM LB4431" UNLESS OTHERWISE NOTED
- ⊕ DENOTES CENTERLINE OF RIGHT OF WAY

LIDBERG LAND SURVEYING, INC.
 675 West Indiantown Road, Suite 200, Jupiter, Florida 33458 TEL. 561-745-8454

| | | | | | | |
|--|-------|-----------|-------------|--------|--------|---------------|
| CAD: K:\UST \ 194343 \ 06-096-306 \ 06-096-306.DGN | REF: | FLD: | FB: | PG: | JOB: | 06-096-306 |
| OFF: CASASUS | DATE: | JUNE 2011 | CKD: D.C.L. | SHEET: | 2 OF 2 | DWG: 006-096P |